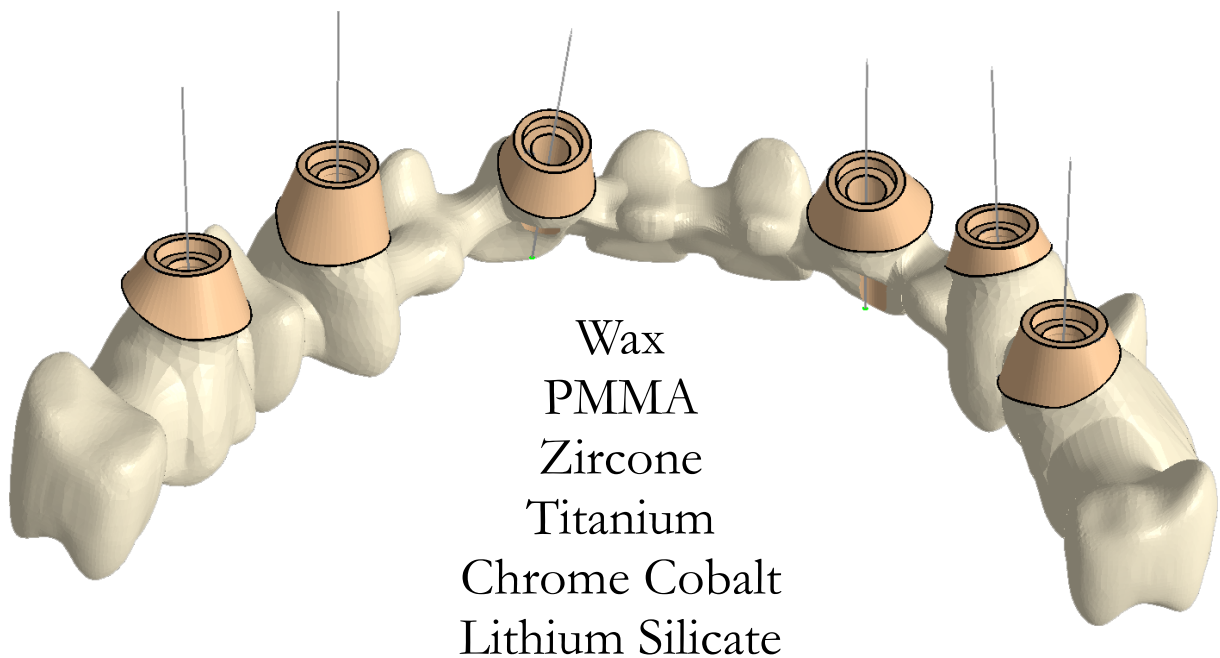




- ✓ Adapted to any material
- ✓ 100% compatible with your CAD & milling center
- ✓ 4 & 5 axis milling technologies



Cam software is a quality key for your production process :

Mayka dental CAM is a 3D milling software that allows you to manufacture crowns with machine tools. It works in conjunction with existing scanners on the market

Material :

Mayka dental as been checked and approved on many different materials like Wax, PMMA, Zircon, Titanium, Chrome Cobalt, Lithium Silicate, ...

Experience sharing :

The software comes to you ready to use thanks to template milling strategies made directly with material producers and machine tool manufacturers.

Productivity :

Rapid preparation with nesting, sintering pins, attachment features, fast toolpath computation.

Compatibility :

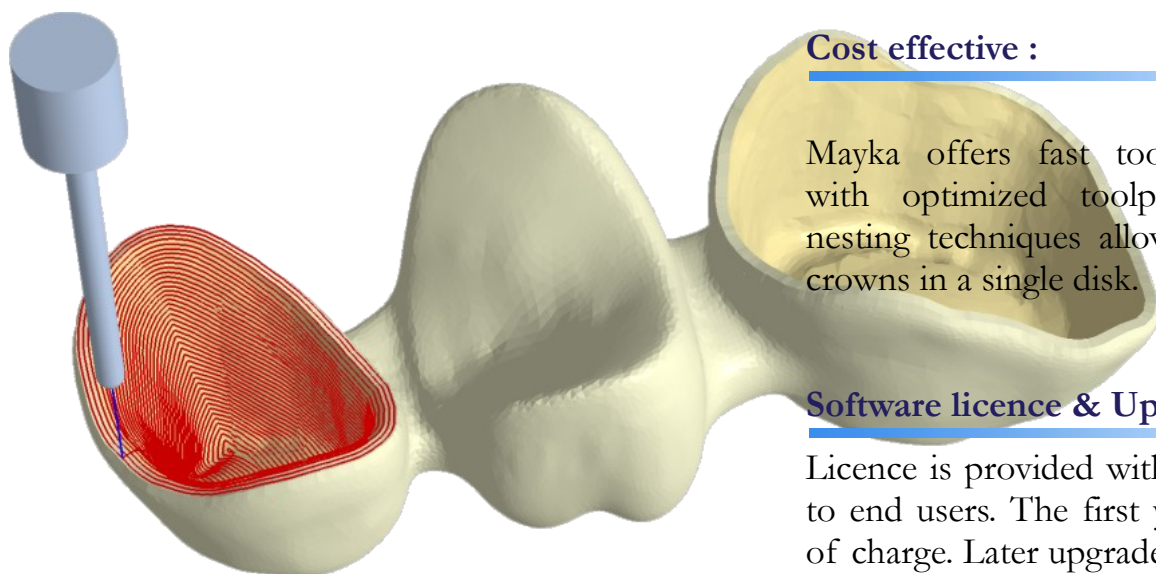
We offer compatibility with many different digitizing scanners and machines tools. A single licence of Mayka Dental can be used to manage productions on machines tools from separate manufacturers.

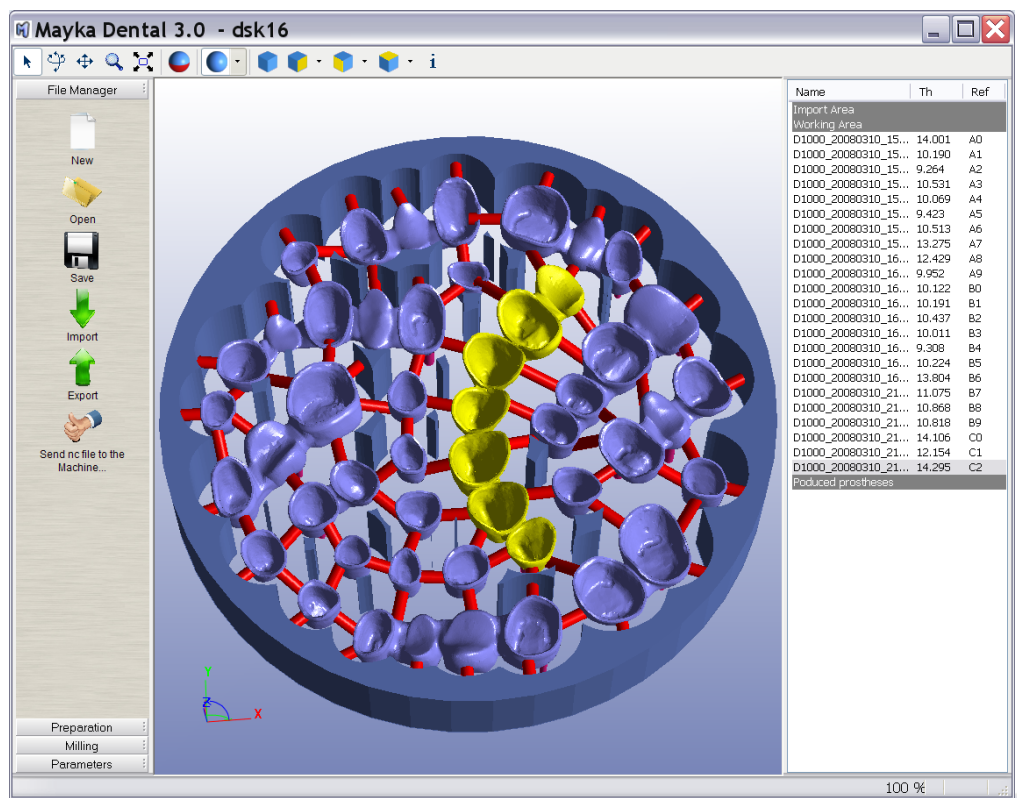
Cost effective :

Mayka offers fast toolpath computation with optimized toolpath. Its advanced nesting techniques allow to mill up to 50 crowns in a single disk.

Software licence & Upgrades :

Licence is provided with no time limitation to end users. The first year upgrade is free of charge. Later upgrades are optional.





Features :

- ✓ Import : STL files from many scanners and CAD Software
- ✓ Export : NC file for machine tools
- ✓ Disk library (Cube, Cylinder, Disk, and user define stock)
- ✓ Machine library
- ✓ Template milling strategy library (already configured for standard material)
- ✓ Collision checking for placement optimisation.
- ✓ Advanced placement features to include up to 50 crowns in a single disk
- ✓ Free space checking
- ✓ Toolpath checking
- ✓ Tool changer management
- ✓ Abutment 5 axis detection and milling
- ✓ 4 & 5 axis milling center support
- ✓ 3D realistic view that describe milling results in real time.
- ✓ No need of extra drawing to limit milling
- ✓ MultiCore support to take full benefits of dual core and Quad core on modern computer. This technology allows to reduce drastically toolpath computation in comparison with other Cam systems.
- ✓ Production report and references engraving to identify crowns after production.
- ✓ Attachment creation
- ✓ Sintering pins creation
- ✓ Residual material left in block saved for next production

Technology :

- ✓ Sweeping and Z level roughing and finishing
- ✓ Remachining features.
- ✓ Offset Finishing
- ✓ Abutment 5 axis milling strategies
- ✓ Tool path limited to partition line
- ✓ Ramp plunging to perform soft entry in stock
- ✓ Attachments reduction milling strategy
- ✓ Sintering pins dedicated milling strategy

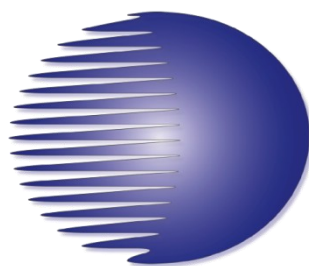
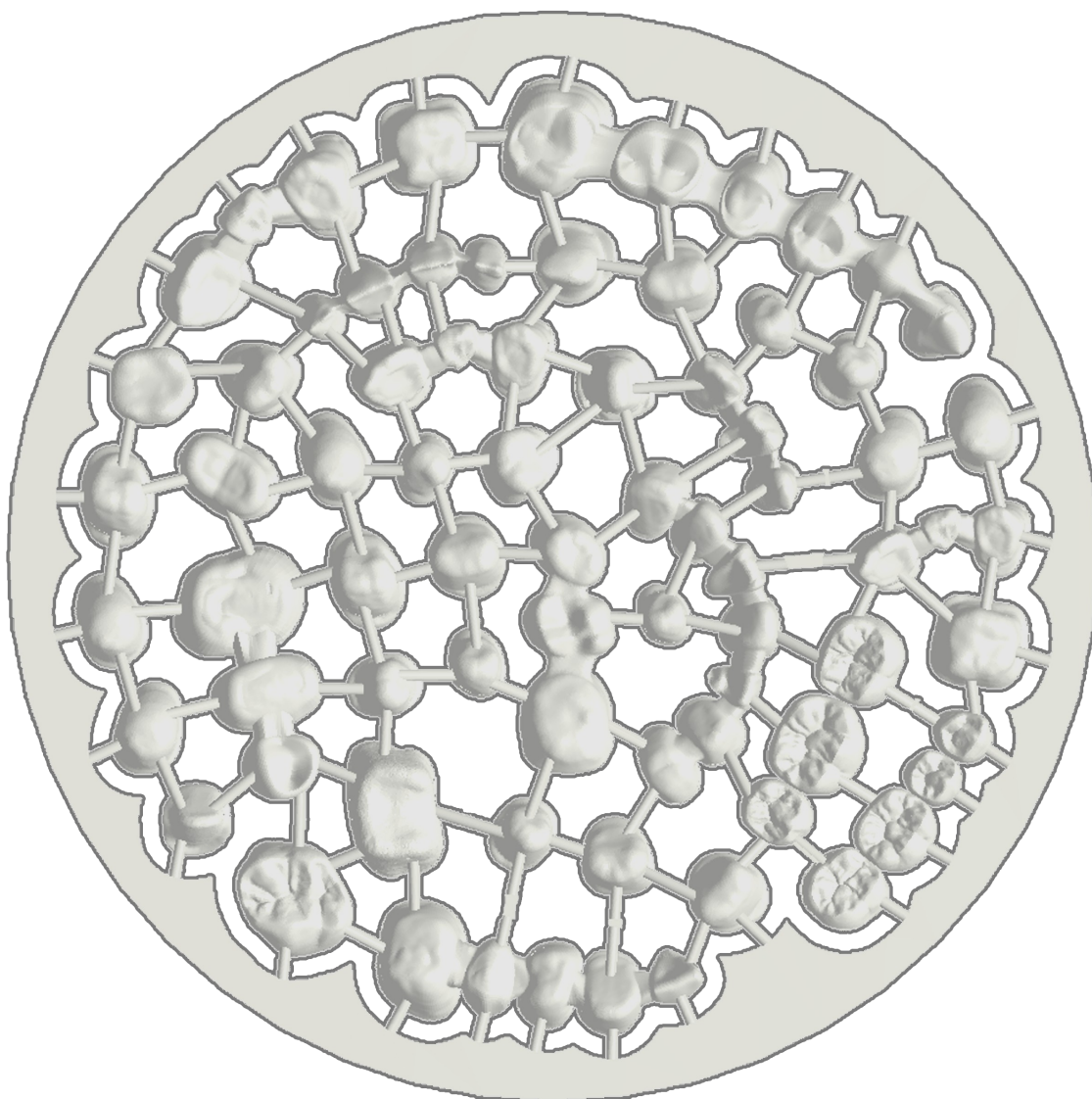
Compatibility :

CAD / Scanner : STL file import for compatibility with the most popular scanner and CAD software on the market like 3Shape™, Dental Wings™, Evirsa™, Laser Denta™ ...

Machines : Open Software compatible with many different machine tools (CharlyRobot™, Imes™, Isel™, Roland™, YenaMak™, ...) Possible evolution with new post processor on request.

Operating System : Windows 2000, XP & Vista

Hardware : DualCore Processor, 3Gb Ram, Nvidia graphic card and 22 inch screens



PicaSoft

Phone +33 254 833 216

Fax +33 254 833 572

dental@picasoft.com

<http://dentalcam.picasoft.com>